

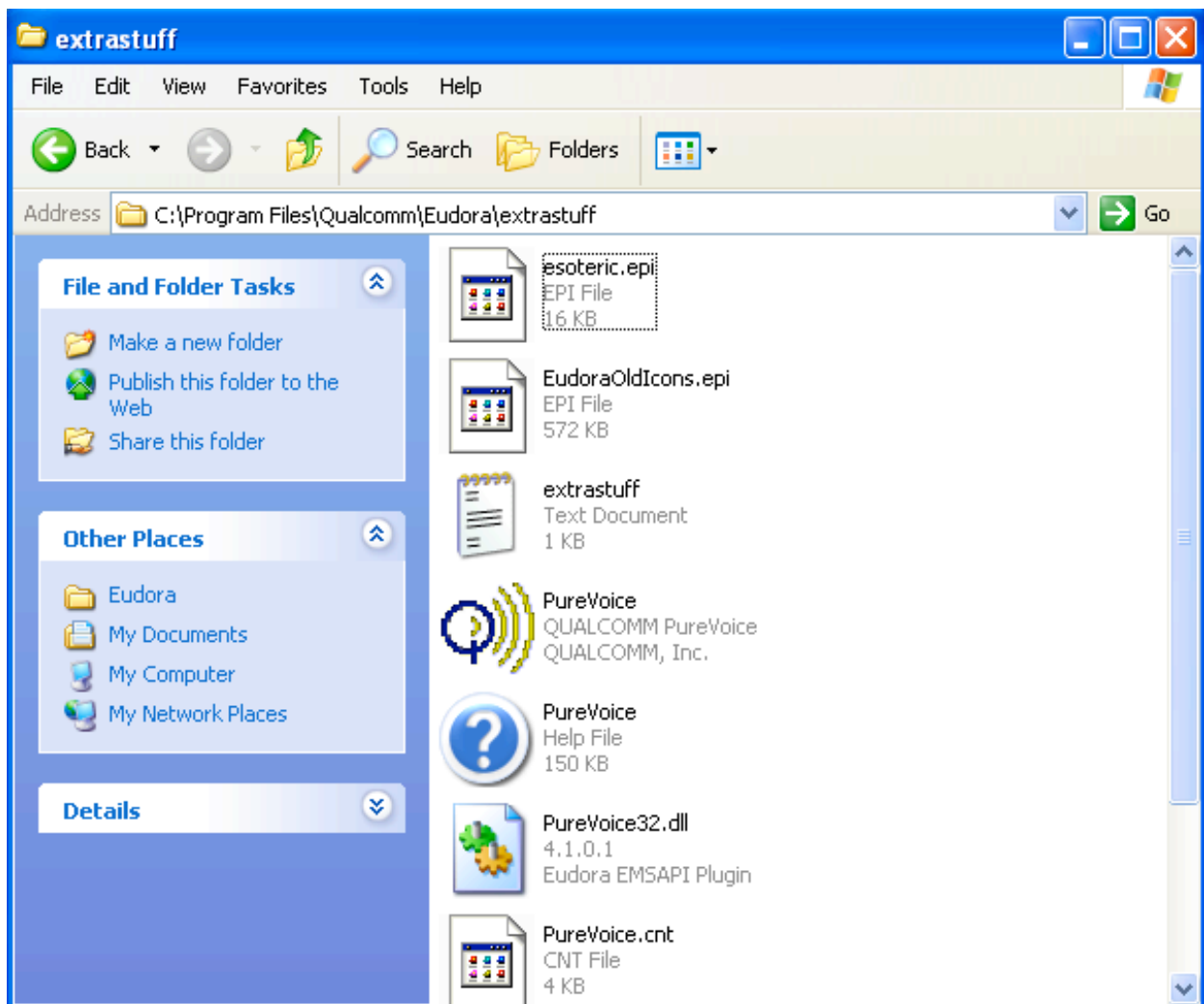
Rough instructions to get Eudora and LoaPost working together. Please note that Eudora is not a supported product at this time: you're on your own with this!

Verbose screenshots:

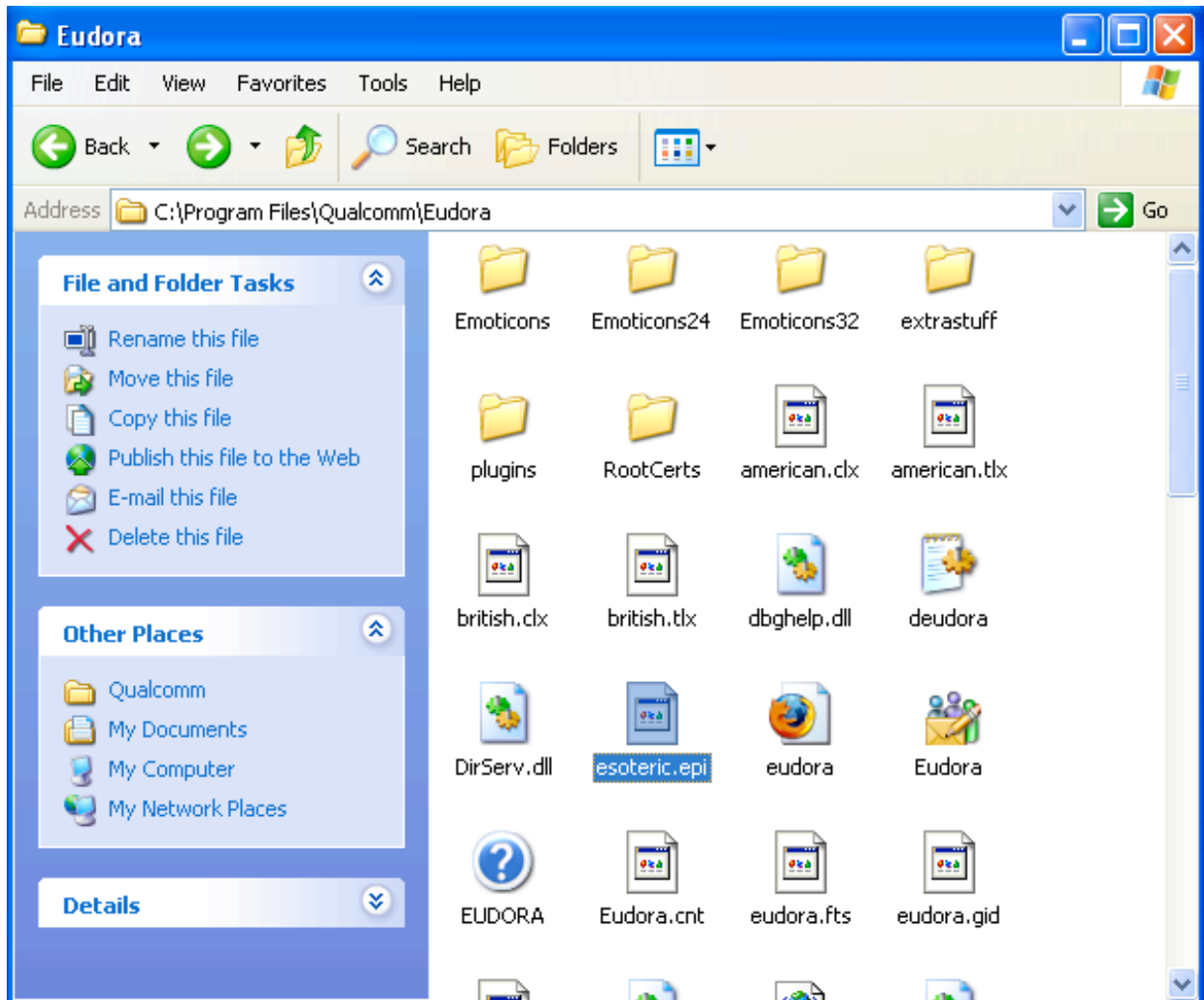
Stop Eudora

Copy esoteric file:

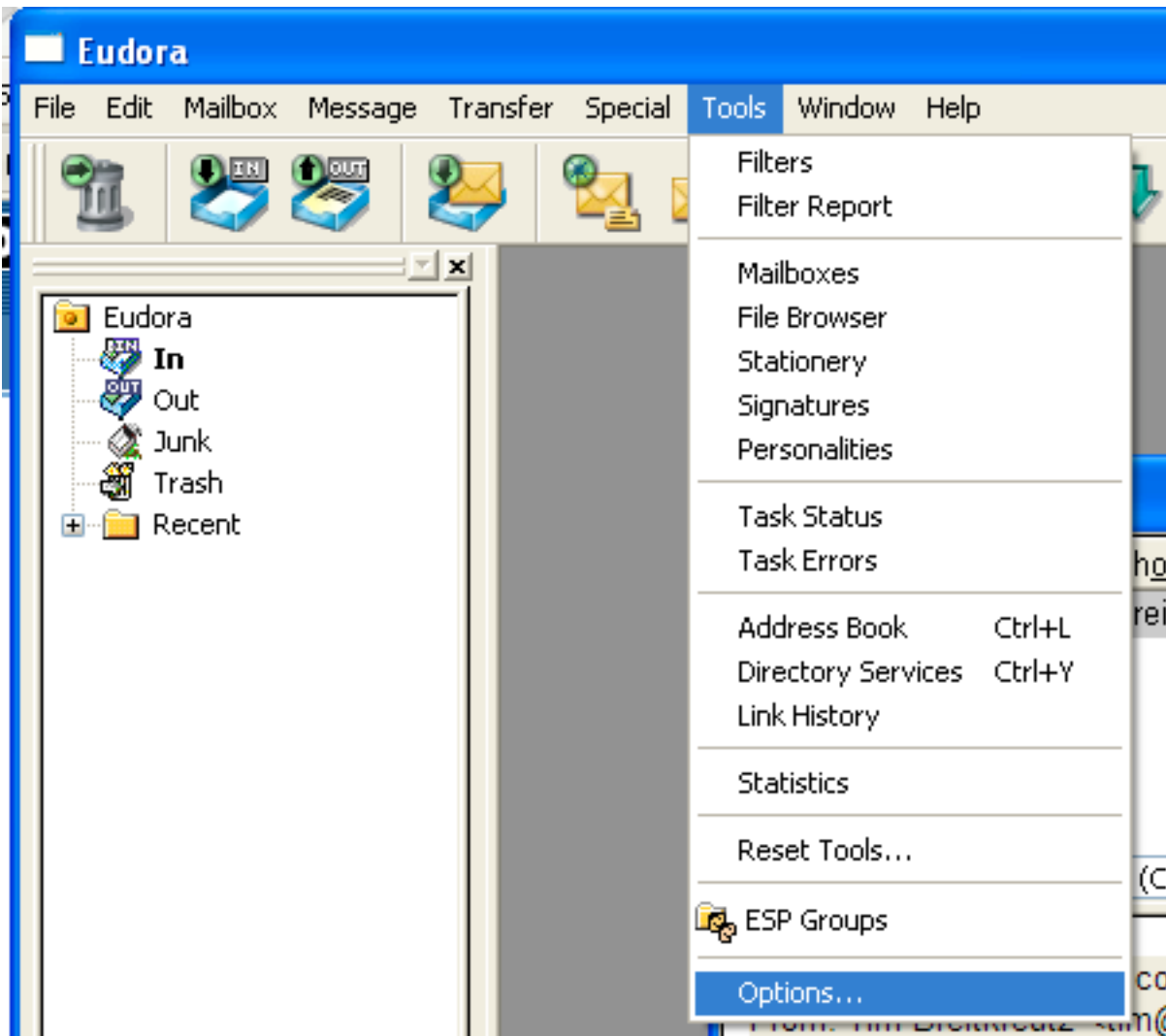
Navigate into Program Files\Qualcomm\Eudora\extrastuff:



Select esoteric.epi, ctrl-C, hit Back, Ctrl-V (or whatever)



Start Eudora, select Tools->Options...



Scroll down to Ports category, enter 2525 to SMTP Port, hit OK

Options



Category:

- Logging
- Task/Error windows
- Sending Mail+
- RAS Prefs
- Threading
- Ports**

SMTP Port (25):

POP Port (110):

IMAP Port (143):

ACAP Port (674):

Eudora Password Change Port (106):

OK

Cancel

Help